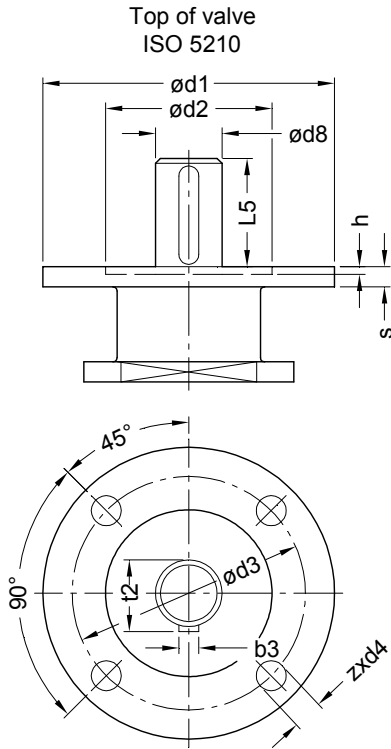
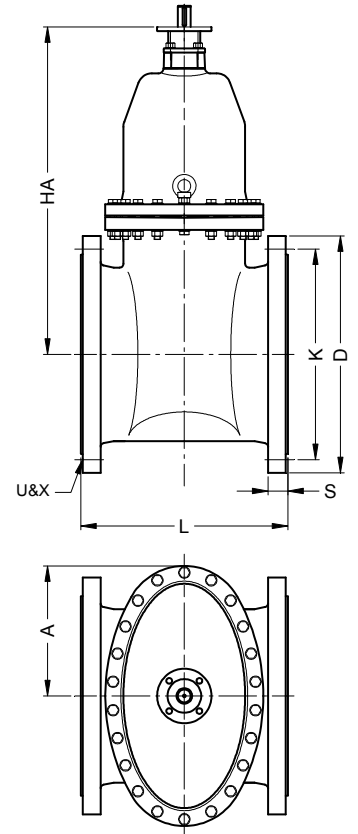


Class	Max. CWP	Test Pressure	Connections	Operation
250	300 Psi	Shell 450 Psi Seat 300 Psi	Flanges R.F. ASME B 16.1 Face to Face ASME B 16.10	Prepared for Actuator



DN	Torque lbf	No. of turns Open/Close
16"	257	60
18"	301	67
20"	364	74
24"	478	78
30"	366	90
36"	885	106
42"	1031	117
48"	1398	102

Approximate operating torque and number of turns direct on stem.
Valid for all class 250 Seguro valves.
The seating torque is up to 10% higher.



Flange for multiturn actuator

ISO 5210	$\phi d1$	$\phi d2$	$\phi d3$	$\phi d4$	h	s	z
F16	8,27	5,12	6,50	0,87	0,22	0,63	4
F25	11,81	7,87	10,00	0,71	0,22	0,63	8
F30	13,78	9,06	11,73	0,87	0,22	0,71	8

Materials		
Body	Seal	
Grey	NBR	12-A1311AL
Iron	EPDM	12-A1312AL
Ductile	NBR	12-A1331AL
Iron	EPDM	12-A1332AL

Due to constant development of our products, minor deviations in the design and non-standardized dimensions may occur.

DN	A	D	HA	K	L	S	U	X	b3	$\phi d8$	L5	t2	ISO 5210
16"	14,57	25,50	35,50	22,50	24	2,25	20	1,375	0,47	1,57	3,15	1,69	F16
18"	16,10	28,00	38,30	24,75	26	2,38	24	1,375	0,47	1,57	3,15	1,69	F16
20"	24,61	30,50	40,90	27,00	28	2,50	24	1,375	0,47	1,57	3,15	1,69	F16
24"	19,80	36,00	50,10	32,00	31	2,75	24	1,625	0,55	1,97	3,15	2,11	F16
30"	24,49	43,00	69,10	39,25	36*	3,00	28	2,000	0,71	2,56	4,33	2,72	F25
36"	30,24	50,00	77,40	46,00	40*	3,38	32	2,250	0,71	2,56	4,33	2,72	F25
42"	32,09	57,00	90,90	52,75	44*	3,69	36	2,250	0,71	2,56	4,33	2,72	F25
48"	35,43	65,00	98,90	60,75	48*	4,00	40	2,250	0,98	3,54	5,12	3,74	F30

Notes: * Not included in the standard.
U = No. of bolts. X = Size of bolt holes.